



Penda Learning

Schoology Integration Guide

Updated October 2023

Penda Learning supports the Schoology Learning Management System.

Administrative privileges within your Schoology account are required. No knowledge of LTI or the technical concepts are required, however, it will help to know what the various terms mean.

This document uses the same terminology referenced by IMS Global for LTI. When referring to the “tool” think Penda. When referring to the “platform” think Schoology.

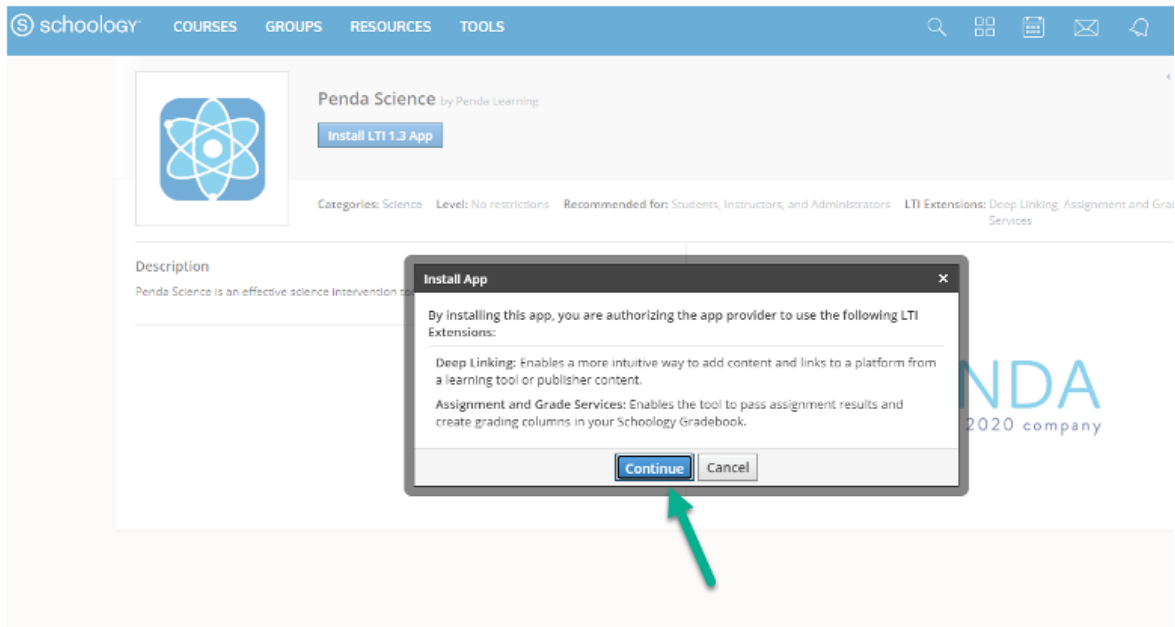
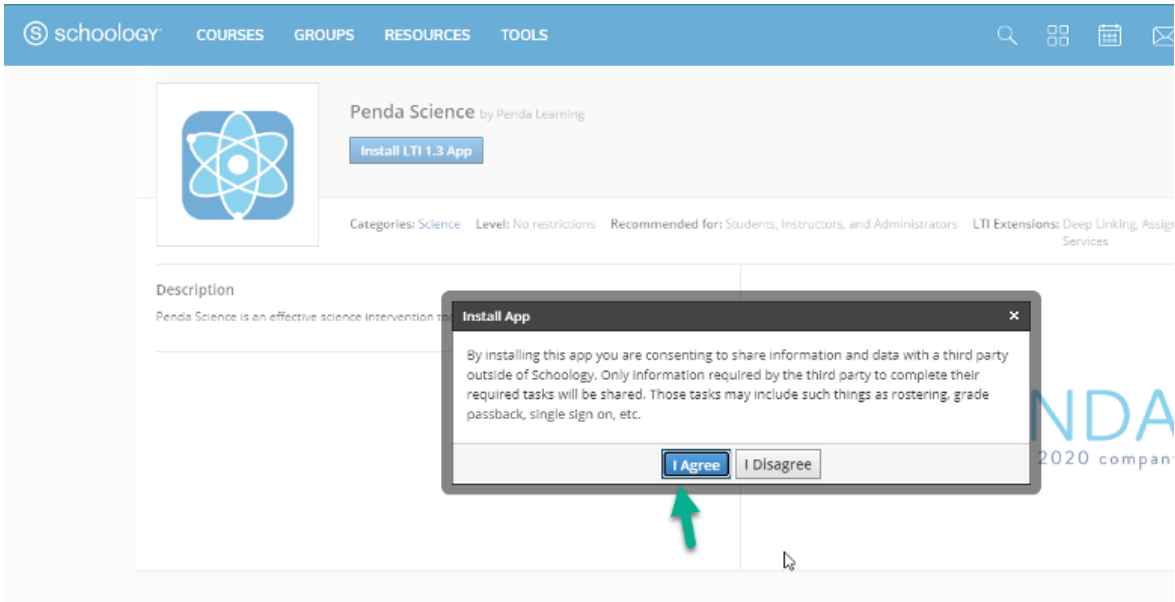
At the end of the integration steps, you will be able to automatically login to Penda through Schoology and create materials for your courses.

Please follow the instructions carefully and reach out if you have any questions.

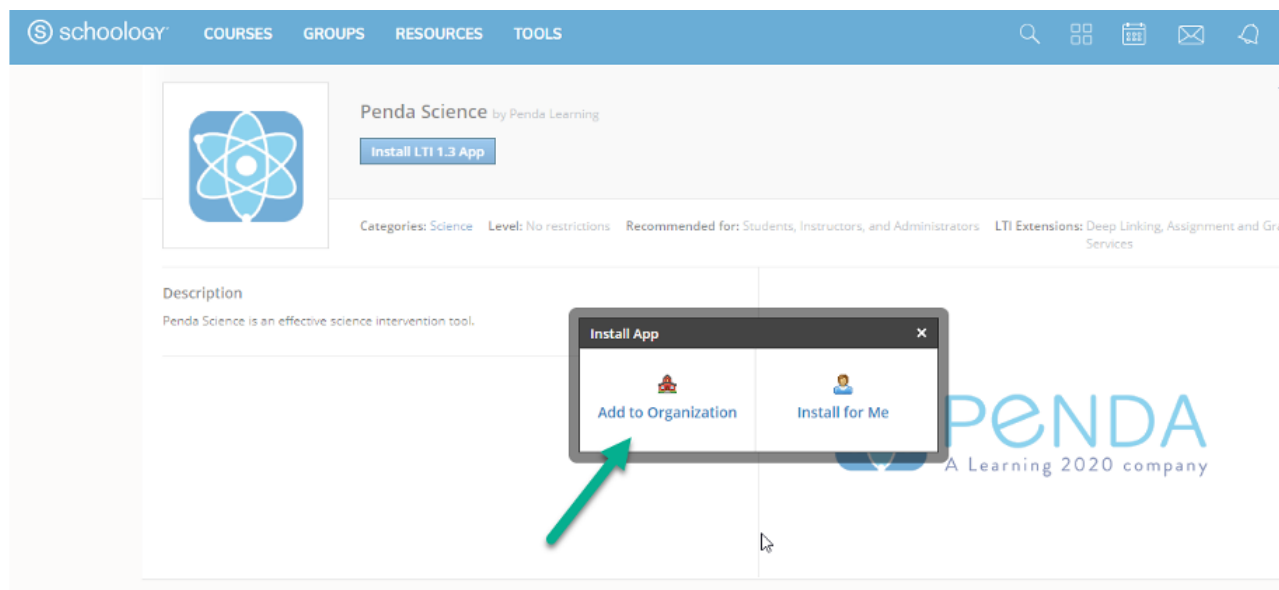
Important! You will need to share your Deployment ID with Penda Support on the last step to complete the app installation. Please reach out to Penda Support if you face some problems finding it.

1. Install the Application

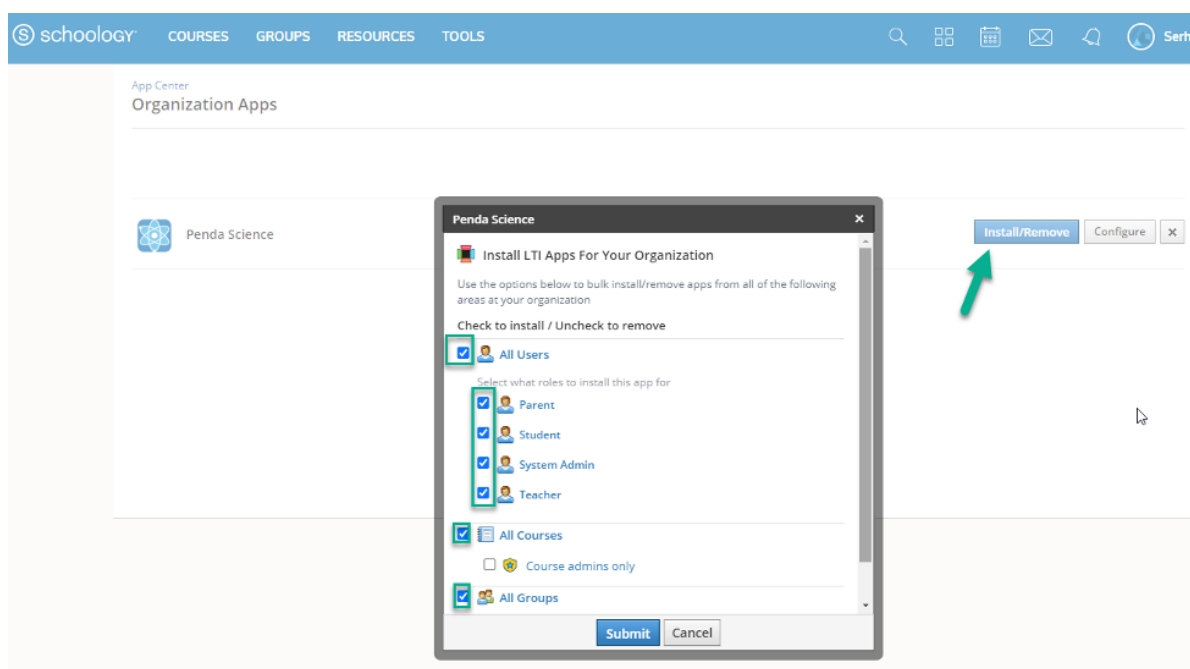
Log into Schoology as an administrator and navigate to the [Penda App profile](https://app.schoology.com/apps/profile/5033107021) (<https://app.schoology.com/apps/profile/5033107021>). Click the “Install LTI 1.3 App” button. You will be asked to agree to sharing information, select “I Agree”, then click “Continue”



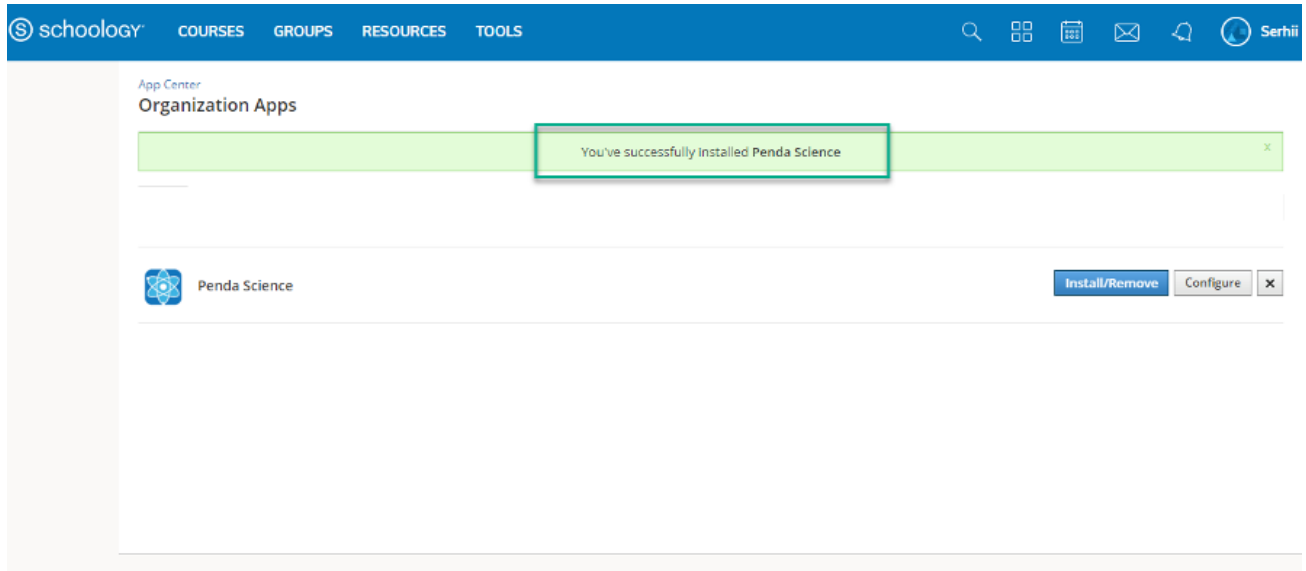
and choose the option “Add to Organization”.



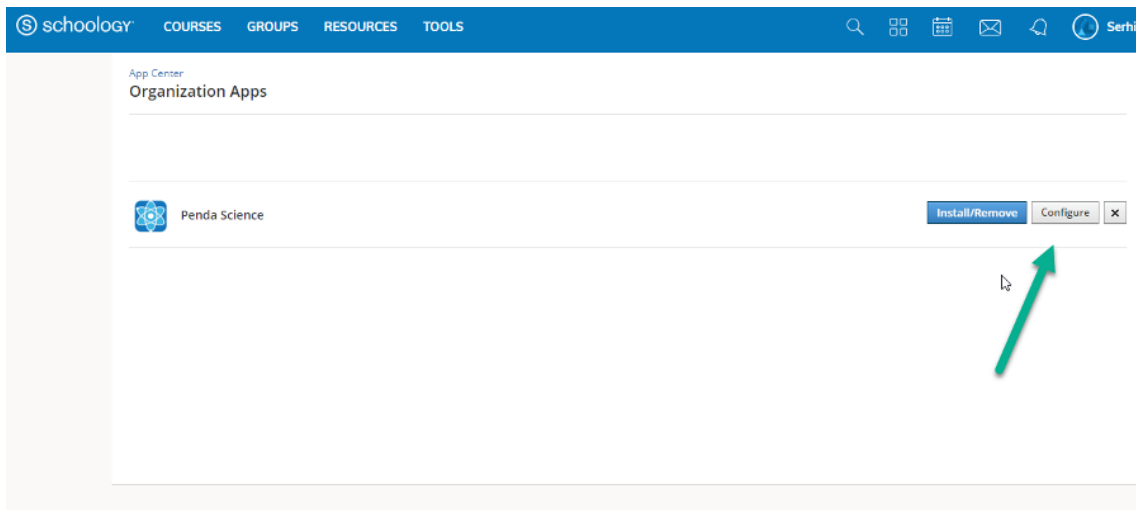
Schoology will redirect you to the “**Organization Apps**” page. Find the “**Penda Science**” app and click the “**Install/Remove**” (1). In the popup set “**All Users**” (2), “**All Courses**” (3) and “**All groups**” (4) checkboxes and click “**Submit**” (5).



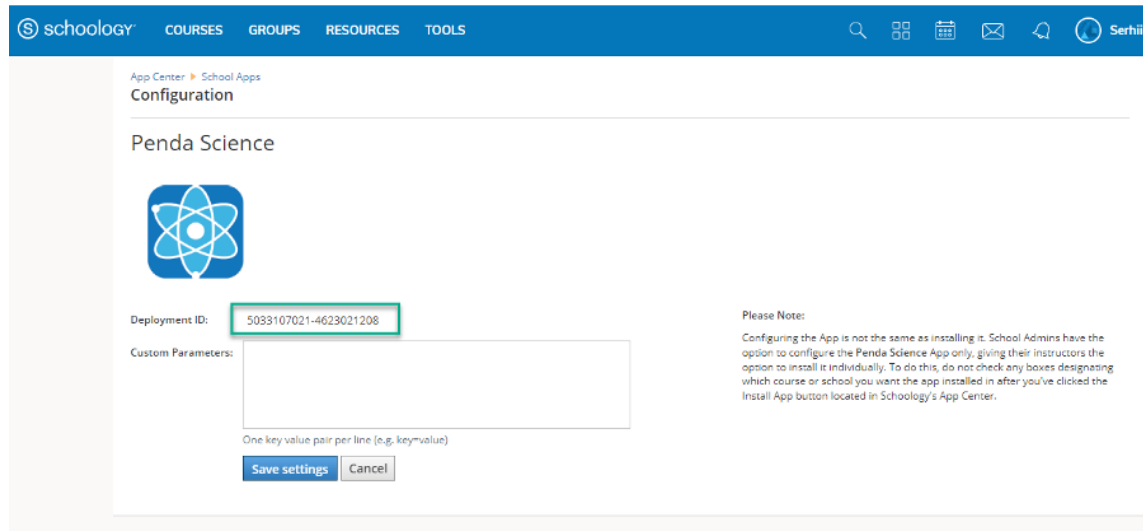
If the application was installed successfully, you will see the message “You’ve successfully installed Penda Science.”



Now you are able to see the “**Penda Science**” option in course and material menus, but you can not use the tool without sharing Deployment ID with Penda support team. To do so click the “**Configure**” (1) button on the “**Organization Apps**” page to edit to the app’s settings.



Copy the “**Deployment ID**” (1) and share it with the Penda Support team by emailing us at support@pendalearning.com. This value will be added to the connection configuration on Penda side.



2. Done!

You should now have Penda integrated into your Schoology account as an LTI app!

If you have any questions or need help with the integration, please feel free to reach out to Penda Support.